

SAFETY AND SCHOOL ENVIRONMENT

Non-CSAP Course Offerings

Your School Offers	does	does not
• art.....	<input checked="" type="checkbox"/>	<input type="checkbox"/>
• drama or theater.....	<input type="checkbox"/>	<input checked="" type="checkbox"/>
• music.....	<input checked="" type="checkbox"/>	<input type="checkbox"/>
• physical education.....	<input checked="" type="checkbox"/>	<input type="checkbox"/>
• opportunity for civic or community engagement.....	<input checked="" type="checkbox"/>	<input type="checkbox"/>
• internet safety program.....	<input checked="" type="checkbox"/>	<input type="checkbox"/>
• International Baccalaureate.....	<input type="checkbox"/>	<input checked="" type="checkbox"/>
• extracurricular activities.....	<input checked="" type="checkbox"/>	<input type="checkbox"/>
• athletics.....	<input checked="" type="checkbox"/>	<input type="checkbox"/>
• career and technical education.....	<input checked="" type="checkbox"/>	<input type="checkbox"/>
• advanced placement.....	<input type="checkbox"/>	<input checked="" type="checkbox"/>
• honors.....	<input checked="" type="checkbox"/>	<input type="checkbox"/>

Safety and Discipline

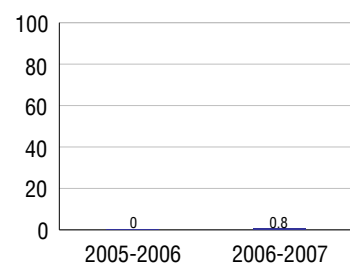
Safe schools are a top priority for parents, teachers, and communities. Your school safety and discipline record for the 2007-2008 school year is:

Type of Incident	Number of Incidents Reported	Percent of Total Incidents
Substance Abuse - Drugs	1	6.2%
Substance Abuse - Alcohol	2	12.5%
Substance Abuse - Tobacco		
Felony Assaults		
Fights	5	31.2%
Possession of Dangerous Weapons		
Other Violations Code of Conduct	8	50.0%

Student Attendance and School Calendar

2007-2008	Your School
Enrollment	117
Average Daily Attendance	111
Student Dropouts	0.8%

Dropout Rate



Student Information Over Time

	2005-2006	2006-2007	2007-2008
Student Enrollment Stability	99.2%	96.7%	100.0%
Students Eligible for Free and Reduced Lunch	34.2 %	49.2 %	41.0 %

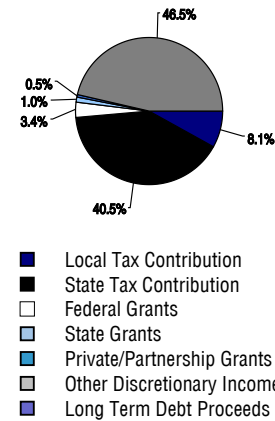
For more information and further details about this report, visit www.state.co.us/schools
 Colorado Department of Education, 201 East Colfax Ave. Denver, CO 80203
Mc Clave Undivided High School
 0310/5670/H
 308 Lincoln Street . Mc Clave, CO 81057 . 719-829-4517
 10/20/2008

DISTRICT TAXPAYER'S REPORT

Sources of School District Revenue 2007

Local Tax Contribution	\$383,438
State Tax Contribution	1,909,810
Federal Grants	160,072
State Grants	46,085
Private/Partnership Grants	22,049
Other Discretionary Income	2,188,926
Total District Operating Revenue	\$4,710,380
Long Term Debt Proceeds	0
Total District Revenue	\$4,710,380
Total District Operating Revenue Per Pupil =	\$19,305
Total District Revenue Per Pupil (Including Long Term Debt) =	\$19,305
District Per Pupil Operating Revenue =	\$8,351
State Average Per Pupil Operating Revenue =	\$6,080

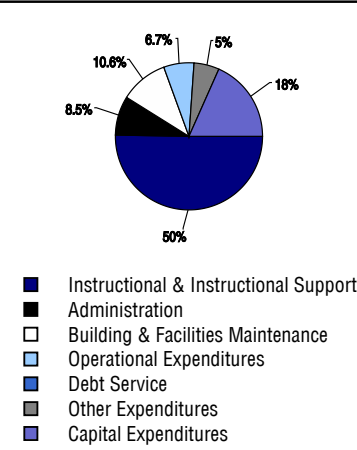
District Source of Funds 2007



District Use of Funds 2007

Instructional & Instructional Support	\$1,445,592
Administration	244,840
Building & Facilities Maintenance	302,922
Operational Expenditures	191,940
Debt Service	0
Other Expenditures	157,624
Total District Operating Expenditures	\$2,342,918
Capital Expenditures	525,313
Total District Use of Funds	\$2,868,231

District Use of Funds 2007



District Debt and Capital Construction & Equipment

Total Outstanding Bonded Debt	\$0
Average Annual Percentage Interest Rate on Debt	0%
Amount Raised from Most Recent Bond	\$0
Amount Spent on New Buildings During Last 2 Years	\$373,434

Accreditation

Accreditation is Colorado's primary accountability system, incorporating achievement levels, academic growth, achievement gaps, post-secondary readiness, improvement planning, and compliance. The state accredits districts and districts accredit individual schools.

District Accreditation Status for the 2007-2008 school year:

Voter Approved Funding Changes

Your community did /did not hold an election in November 2006

The following items have been approved by voters:

TABOR Override

Bond

Mill Levy Increase

MC CLAVE UNDIVIDED HIGH SCHOOL



MC CLAVE RE-2

<http://www.mcclaveschools.org/>

School Accountability Report 2007-2008 School Year

School Performance Summary

Overall Academic Performance on State Assessments

High

Academic Growth of Students

Typical

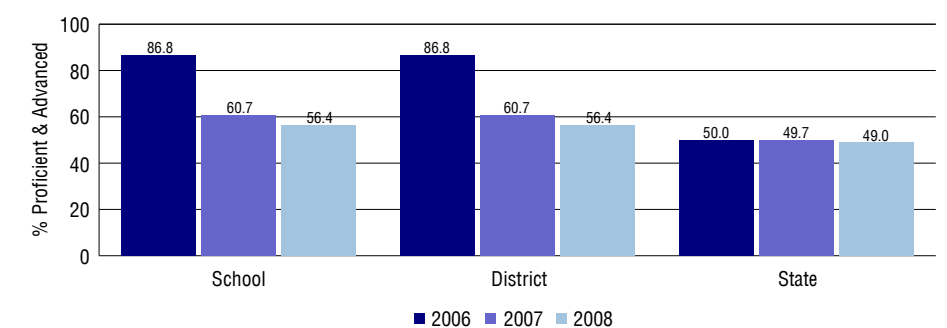
Overall Academic Performance on State Assessments

Each school in the State received a rating of "Excellent", "High", "Average", "Low", or "Unsatisfactory" for student academic performance based on 2007-2008 CSAP and COACT results. The rating is calculated using weighted percentages of each CSAP proficiency level for all content area and grade results for the school, as well as average COACT Reading, Writing, and Math Grade 11 results.

Academic Growth of Students

Each school in the State received a rating of "Low", "Typical", or "High" for student academic growth based on CSAP results. The calculation method is new for 2007-2008. The rating is calculated using student percentile scores matched over two years. More information about the Overall Academic Performance rating and Academic Growth of Students calculations can be found here: http://www.cde.state.co.us/cdeassess/SAR_Info.html.

Percent Proficient and Advanced for High Grades for All Content Areas



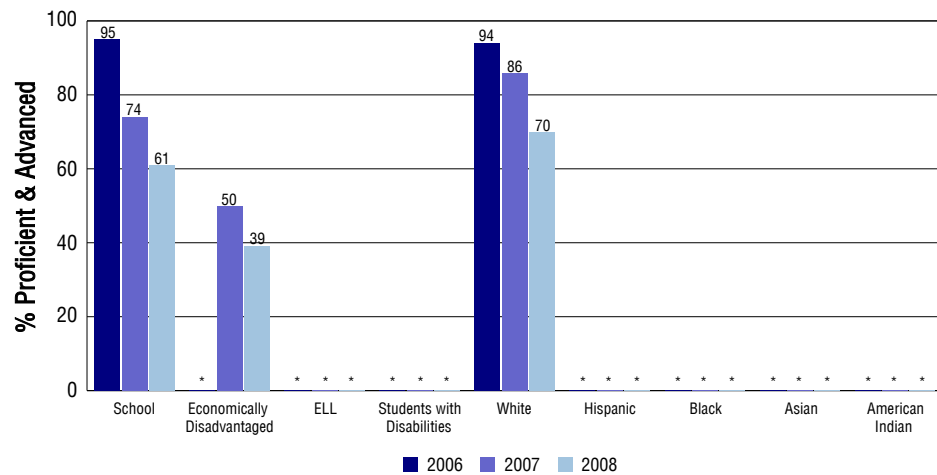
Student Test Scores Used For Calculating Overall Academic Performance

100.0%	Test Scores Counted
0.0%	Test Scores not used due to Language
0.0%	Test Scores not used due to New Student

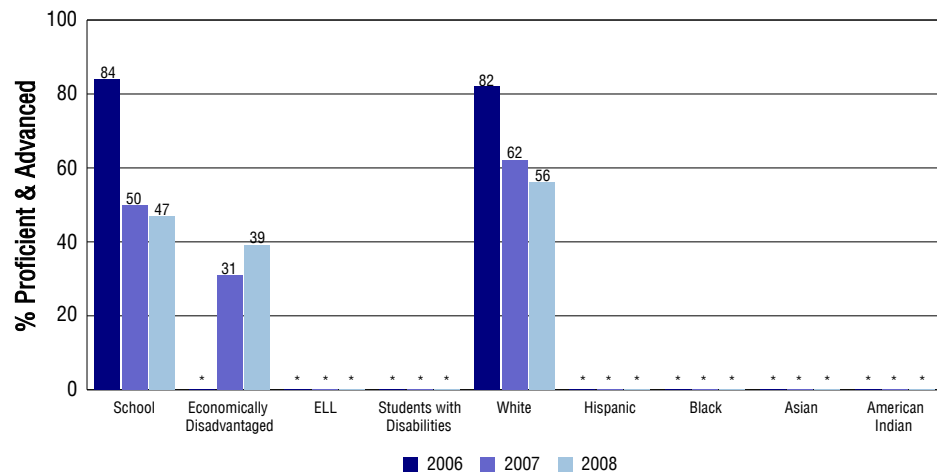
STUDENT PERFORMANCE

These graphs show the percent Proficient and Advanced trends over the past three years for Reading, Writing, and Math. Results are presented for the entire school for all reported grades as well as for different subgroups. Note: * indicates any group with less than 16 student results to be reported.

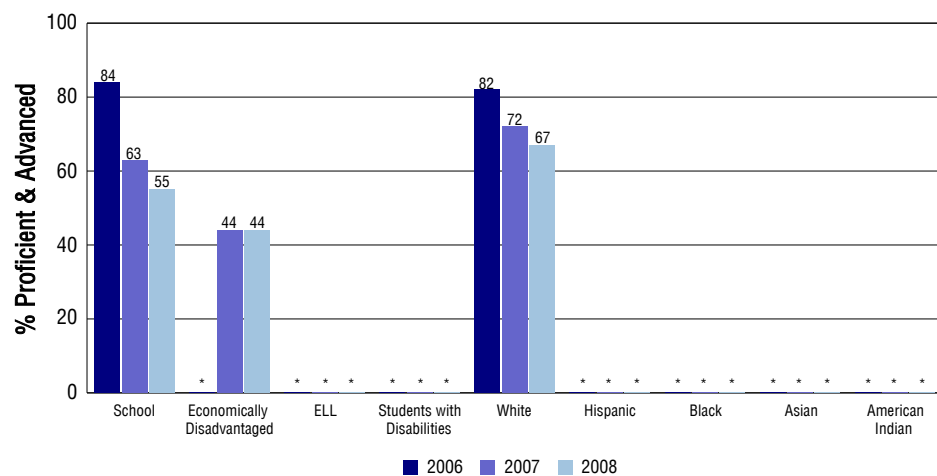
Reading



Writing



Math



SCHOOL INFORMATION

School Pride (as submitted by your district)

- High academic scores
- Athletic championships
- Number one state ranked vocational programs
- State and National awards

School Goals (as submitted by your district)

To have all students learn in civil and safe environment. To have every student score at or above proficient in all areas of CSAP. To have student data prove each student progressing better than a years' growth in a years' time.

No Child Left Behind - Adequate Yearly Progress

Did your school make AYP in reading? Yes Math? Yes
 Did your school make the graduation rate targets? Yes
 How many targets does your school have? 5 Met? 5

Based on this school's academic performance, your child may be eligible for one or more of the following; ask your school if your child qualifies for:

Extra academic instruction either before or after-school, or in the summer
 Mentoring

For additional information regarding Adequate Yearly Progress please visit
<http://www.cde.state.co.us/FedPrograms/ayp/index.asp>

How Mc Clave Undivided High School Compares To High Schools Within A 75-Mile Radius

School	Program Type	Academic Performance	Academic Growth
Wiley Junior-Senior High School(1)		High	Typical
Lamar High School(2)		Average	Typical
Las Animas A+ Distance Learning School(3)	Online	Unreportable	No Rating
Las Animas High School(3)		Average	Typical
Eads High School(4)		High	Typical
Granada Undivided High School(5)		Average	Typical
Cheraw High School(6)		Average	Typical
Tiger Learning Center(7)	Alternative	Low	No Rating
La Junta High School(7)		Average	Low
Holly Junior-Senior High School(8)		High	Typical

1 Located in Wiley RE-13 Jt School District.
 2 Located in Lamar RE-2 School District.
 3 Located in Las Animas RE-1 School District.
 4 Located in Eads RE-1 School District.
 5 Located in Granada RE-1 School District.
 6 Located in Cheraw 31 School District.
 7 Located in East Otero R-1 School District.
 8 Located in Holly RE-3 School District.

ABOUT OUR STAFF

School Employment

Each year, your district reports to the Colorado Department of Education on the number of adults who work in your school, as well as the type of work they do. Last year, your school employed:

	Your School		District	
	Full Time	Part Time	Full Time	Part Time
Teachers	8	5	20	2
Paraprofessionals	0	1	7	2
Administrators	0	1	2	0
Other Professionals	0	0	0	0
School Support	1	1	9	7
School Counselors	0	1	0	1
School Librarians	0	1	1	0
Total Staff	18		49	

Students per Teacher Ratio

	Student Enrollment	Students per Teacher
Grade 9	19	10.3
Grade 10	19	10.3
Grade 11	20	10.8
Grade 12	17	9.2

Professional Experience of Teachers

	Your School	District
Average years of teaching experience	10	13
Percent of teachers teaching in the subject in which they received their degree	85%	85%
Number of teachers with Masters or Doctoral degrees	6	9
Teachers with 3 years or more of teaching experience	8	15
Teachers with less than 3 years of teaching experience	5	7
Number of professional development days	9	9

Salaries

	Your School	District	State
Average Teacher Salary	\$31,908	\$32,071	\$47,494
Average Administrator Salary	\$62,000	\$69,006	\$80,444

Principal: Allan Medina

Number of years as Principal at this school: 1 (New Hire 2007/2008)

Number of years as Principal at any school: 9